

GUARDIANS OF YOUR SAMPLES

CONTACT



Bavnevej 10
6580 Vamdrup
Denmark



info@bscienceglobal.com
www.bscienceglobal.com



+45 287 287 62



B SCIENCE

B SCIENCE

PREMIUM LINE

BioMedical Freezers
& Refrigerators

B SCIENCE



B SCIENCE

① — High Tech Engineering Knowhow

At B Science Global, we value innovation very highly which is one of the reason why most of our staff have an engineering back ground. We aim to be the most innovative lab equipment manufacture in the world that understand the needs and can see the upcoming needs in the market as well.

For B Science it is crucial to have a very high level of smart thinking in all our products.

The motto of B Science Global R&D department is "if you can think it, we can make it"

② — Made in Denmark

Being partner with B Science Global you can depend on us being a company that is "MADE IN DENMARK".

Our Biological Safety Cabinets, Ultra Low Temperature Freezers, Biomedical Refrigerators & Freezers & CON20 Biotech Large Scale cold storage units are manufactured at our main location in Denmark where our factory size is almost 7.000 m2. Additionally, we have part in a state of the art robotic sheet metal facility that has more than 30 different machinery that covers all our steel usage. It is based in Denmark and been made with Danish workman ship.

③ — Certification - ISO



① — Qualification and Validation in accordance with GMP (Good Manufacturing Practices)

GMP is of the highest priority for our company and every employee of B Science Global. It is the optimal way that we can ensure our self, our partners, and user of our equipment that each single component used in every single equipment we produce, has the highest quality consistency that can be validated and traced back at all time.

Our key focus helps us throughout our whole supply chain, to optimize and continually analyzing every aspect of our company and processes.

In this way B Science Global PREMIUM LINE directly contributes to ensure the lowest possible risk involved in pharmaceutical production that cannot be eliminated through testing.



P R E M I U M L I N E
M O R E T H A N
J U S T S T O R A G E



We provide Our Premium Line with fully docu

We provide all our PREMIUM LINE products with fully documented testing results, it enclouds (PQ)(performance qualification test), SOP, validation guidance, IQ/OQ/PQT (product qualification test). We provide you with these documents so that you can meet the demands and requirement from the pharma industry worldwide.

All the tests is as standard provided for each unit in accordance with the serial number of the product. All of this is without any additional cost!

Here are some of the tests that comes with each unit as standard:

✓ **Temperature mapping**

The temperature map shows you exactly how the stability in the chamber is. The temperature map is made from 2 points on each shelves and the size of the unit defines the number of points there will be in the temperature map.

✓ **Pull down**

The pull down test enables you to see how long time the units takes to reach the desired temperature.

✓ **Open door test for each unit**

The unit is also provided with an actual test of the recovery time by door opening. The door will stay open for one minute and then closed again.

Recovery time is very importen, as it gives you a good information about the units performance.

✓ **Hold over time by power cut**

Each unit is also provided with test of the hold over time by power cut.

How the test of the hold over time are performed depend on the type of the unit.

The power to the unit are cut and the we are provided with the information of how long time the hold over time is.

mented testing

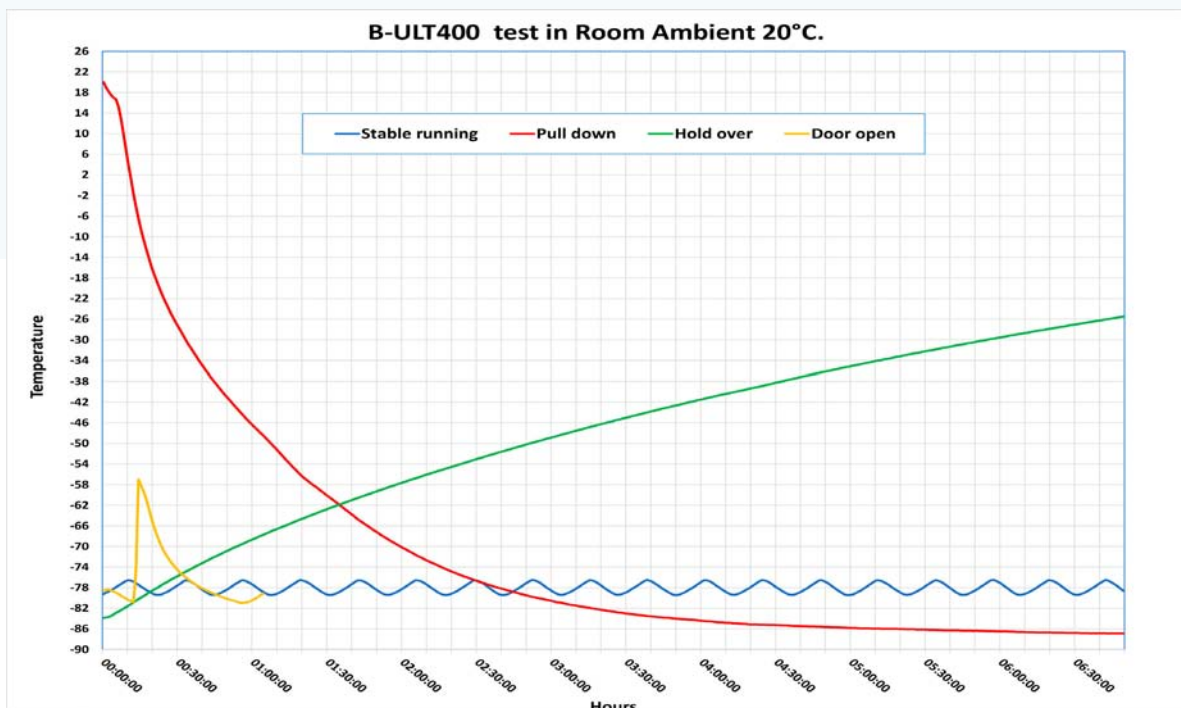
✓ GENERAL DOCUMENTATION

Additionally to the temperature mapping, pull down test, recovery test, & hold over time, we also provide you with information of testing each unit for all alarms and how these test are made. This way you have fully documented information about the performance of the unit you receive. In top of this, you also get the full information and documentation (IQ/OQ/PQT) how to proceed this on site as there is end user that require these tests and well documented information.

This is extremely important to have the right information and documentation when validation is a must.

If there should not be any factory testing within your request for validation, you will still get these test and information. Hereby you actually gets – as standard

- a well tested unit delivered.



ULTU Models

Our range of ULT Freezer -86° C is developed to ensure you a trouble free usage of ultra-low temperature storage through Direct cooling and safe cascade system.

By using this technology we are able to ensure your storage a stabile temperature throughout the hole freezer and at the same time keeping the pull down and recovery time to one of the lowest in the marked. The B-ULT range freezers reach the set point of -80° C from ambient +25° C in less than 3 hours.

With the superb performance of our cooling system having only 3° C peak variation from the set point at -80° C, which is known to probably be the best performance for ULT freezers worldwide. All this we do with a very low energy consumption.

————— **We deliver more than just storage**

Key features



- ✓ Intergrated datalogger
- ✓ Memory for over 15 years of data
- ✓ Interface Potential free remote contact & RS485
- ✓ Date & Time
- ✓ Password protected
- ✓ Temperature graph
- ✓ Ambient temperature
- ✓ Integrated test mode
- ✓ GSM Module integrated (Optional)



- ✓ Door lock
- ✓ Open door alarm
- ✓ 1-2 Inner doors
- ✓ Magnetic silicone gasket
- ✓ Heated frame



- ✓ IQ, OQ, PQT (Production Qualification Test)
- ✓ PQ test (Performance Qualification test)

ULT FREEZER -86°C






Our key goal is always think of how we can develop more environmental friendly product. One of the results is that our B-ULT has one of the lowest GWP (Global Warming Potential) and ODP (Ozone Depletion Potential) outled on market today.

We use natural refrigerant with extremly low GWP and ODP

Environment Effects: GWP: 3 (R290) / 4 (R1150)
ODP: 0 (R290) / 0 (R1150)

MODEL	B-ULT100	B-ULT400	B-ULT550	B-ULT650	B-ULT850
CAPACITY	107 L	406 L	527 L	648 L	890 L
TEMPERATURE RANGE	- 86° C / - 40° C	- 86° C / - 40° C	- 86° C / - 40° C	- 86° C / - 40° C	- 86° C / - 40° C
EXTERNAL DIMENSION (WxDxH) (MM)	830 x 775 x 850	750 x 920 x 1997	890 x 920 x 1997	1030 x 920 x 1990	1310 x 920 x 1997
BOXES 50MM	72 pcs	264 pcs	352 pcs	440 pcs	616 pcs
RACKS	8	12	16	20	28

- 
 - ✓ Visual & acoustic alarms
 - ✓ Compressor Alarm
 - ✓ High / Low adjustable temperature alarms
 - ✓ Power Failure alarm
 - ✓ Open door alarm
 - ✓ Track of alarms to be noted automatically
 - ✓ Probe Failure alarm
 - ✓ Contact for remote alarm (voltages free)
 - ✓ Battery failure
- 
 - ✓ Approx. 48 hours battery Backup for alarms & logging
- 
 - ✓ Upload & Download through USB
 - ✓ Memory for over 15 years of data

BLTU Models

BLTU freezer -45° C upright model secures your samples with extreme good temperature stability.

When -30° C degree storage is not enough, the BLTU upright model are a safe choice that meets your requirement for low temperature storage.

Additionally this unit fits extremely good for places where the need for temperature storage is -30° / -45° but without auto defrost. Therefore you also get a very stabile temperature inside the cabinet without peaks during auto defrost.

————. **We deliver more than just storage**

Key features



- ✓ Intergrated datalogger
- ✓ Memory for over 15 years of data
- ✓ Interface Potential free remote contact & RS485
- ✓ Date & Time
- ✓ Password protected
- ✓ Temperature graph
- ✓ Ambient temperature
- ✓ Integrated test mode
- ✓ GSM module intergrated (Optional)



- ✓ Door lock
- ✓ Open door alarm
- ✓ Automatic door closing
- ✓ Magnectic silicone gasket



- ✓ IQ, OQ, PQT (Production Qualification Test)
- ✓ PQ test (Performance Qualification test)

LT FREEZER -45°C



MODEL	BLTU580
CAPACITY	580 L
TEMPERATURE RANGE	- 45° C / - 10° C
EXTERNAL DIMENSION (WxDxH) (MM)	740 x 824 x 1994



- ✓ Visual & acoustic alarms
- ✓ Compressor Alarm
- ✓ High / Low adjustable temperature alarms
- ✓ Power Failure alarm
- ✓ Open door alarm
- ✓ Track of alarms to be noted automatically
- ✓ Probe Failure alarm
- ✓ Contact for remote alarm
- ✓ Battery failure



- ✓ Approx. 48 hours battery Backup for alarms & logging



- ✓ Upload & Download through USB
- ✓ Memory for over 15 years of data

RACKS & BOXES



MODEL	B-ULT100	B-ULT400	B-ULT550
CAPACITY	107 L	406 L	527 L
TEMPERATURE RANGE	- 86° C / - 40° C	- 86° C / - 40° C	- 86° C / - 40° C
MAX. AMBIENT TEMPERATURE	+ 25° C	+ 25° C	+ 25° C
NUMBER OF COMPRESSORS	2	2	2
CASCADE COOLING SYSTEM	√	√	√
POWER SUPPLY	230V / 50Hz / 5,7Amp	230V / 50Hz / 6Amp	230V / 50 Hz / 6,2Amp
EXTERNAL DIMENSION (WxDxH) (MM)	830 X 775 X 850	750 X 920 X 1997	890 X 920 X 1997
INTERNAL DIMENSION (WxDxH) (MM)	590 X 520 X 350	470 X 640 X 1350	610 X 640 X 1350
SHIPPING DIMENSION (WxDxH) (MM)	1000 X 900 X 1100	900 X 1300 X 2200	1050 X 1300 X 2200
ALARM			
VISUAL / ACOUSTIC ALARM	√	√	√
OPEN DOOR ALARM	√	√	√
COMPRESSOR ALARM	√	√	√
POWER FAILURE ALARM	√	√	√
ADJUSTABLE HIGH / LOW TEMPERATURE ALARM	√	√	√
APPROX. 48 HRS. OF BATTERY BACKUP FOR ALARMS AND LOGGING	48	48	48
ISOLATION ECOLOGICAL POLYURETHANE FOAM WITH V.I.P. PANES	120	120	120
WEIGHT (KG)	95	216	267
SHELVES	1	3	3
MAX. LOAD PR. SHELF (KG)	30	30	30
TOUCH SCREEN	√	√	√
INTERGRATED DATALOGGER	√	√	√
INTERFACE POTENTIAL FREE REMOTE CONTACT & RS485	√	√	√
USB UP/DOWNLOAD	√	√	√
CASTORS LOCKABLE	FEET	√	√
KEY LOCK	√	√	√
NUMBER OF DOORS	1	1	1
NUMBER OF INNER DOORS	1	2	2
INTERIOR MATERIAL	STAINLESS STEEL	STAINLESS STEEL	STAINLESS STEEL
EXTERIOR MATERIAL	POWDER COATED GALVANIZED STEEL	POWDER COATED GALVANIZED STEEL	POWDER COATED GALVANIZED STEEL

We reserve the right to change specifications without notice. Subject to confirmation, availability and errors.

TECHNICAL DATA



MODEL	B-ULT650	B-ULT850	BLTU580
CAPACITY	648 L	890 L	580 L
TEMPERATURE RANGE	- 86° C / - 40° C	- 86° C / - 40° C	- 45° C / - 10° C
MAX. AMBIENT TEMPERATURE	+ 25° C	+ 25° C	+ 25° C
NUMBER OF COMPRESSORS	2	2	1
CASCADE COOLING SYSTEM	√	√	√
POWER SUPPLY	230V / 50Hz / 6,5Amp	230V / 50Hz / 8Amp	230V / 50 Hz
EXTERNAL DIMENSION (WxDxH) (MM)	1030 X 920 X 1997	1310 X 920 X 1997	740 X 824 X 1994
INTERNAL DIMENSION (WxDxH) (MM)	750 X 640 X 1350	1030 X 640 X 1350	600 X 640 X 1500
SHIPPING DIMENSION (WxDxH) (MM)	1200 X 1300 X 2200	1500 X 1300 X 2200	800 X 920 X 2150
ALARM			
VISUAL / ACOUSTIC ALARM	√	√	√
OPEN DOOR ALARM	√	√	√
COMPRESSOR ALARM	√	√	√
POWER FAILURE ALARM	√	√	√
ADJUSTABLE HIGH / LOW TEMPERATURE ALARM	√	√	√
APPROX. 48 HRS. OF BATTERY BACKUP FOR ALARMS AND LOGGING	48	48	48
ISOLATION ECOLOGICAL POLYURETHANE FOAM WITH V.I.P. PANES	120	120	70
WEIGHT (KG)	315	413	158
SHELVES	3	3	3
MAX. LOAD PR. SHELF (KG)	30	30	30
TOUCH SCREEN	√	√	√
INTERGRATED DATALOGGER	√	√	√
INTERFACE POTENTIAL FREE REMOTE CONTACT & RS485	√	√	√
USB UP/DOWNLOAD	√	√	√
CASTORS LOCKABLE	√	√	√
KEY LOCK	√	√	√
NUMBER OF DOORS	1	1	1
NUMBER OF INNER DOORS	2	2	0
INTERIOR MATERIAL	STAINLESS STEEL	STAINLESS STEEL	STAINLESS STEEL
EXTERIOR MATERIAL	POWDER COATED GALVANIZED STEEL	POWDER COATED GALVANIZED STEEL	POWDER COATED GALVANIZED STEEL

We reserve the right to change specifications without notice. Subject to confirmation, availability and errors.

Biomedical Freezers

The PREMIUM Biomedical freezers are designed, constructed and manufactured with high performance refrigeration systems. These high performance PREMIUM biomedical freezers are used in clinical, biotechnology and industrial labs, where there is need for extra storage solutions for uniformity, reliability and environmentally safe operations.

We use isolation thickness of 70mm to maximize the temperature stability in the freezers.

Again we use natural environment friendly refrigerant for all our PREMIUM Biomedical freezers.

————— **We deliver more than just storage**

Key features



- ✓ Intergrated datalogger
- ✓ Memory for over 15 years of data
- ✓ Interface Potential free remote contact & RS485
- ✓ Date & Time
- ✓ Password protected
- ✓ Temperature graph
- ✓ Ambient temperature
- ✓ Integrated test mode
- ✓ GSM module intergrated (Optional)



- ✓ Door lock
- ✓ Automatic door colsing
- ✓ Open door alarm
- ✓ Magnectic silicone gasket



- ✓ IQ, OQ, PQT (Production Qualification Test)
- ✓ PQ test (Performance Qualification test)

BIOMEDICAL -30°C



MODEL	BMF100	BMF628	BMF1398
CAPACITY	96 L	628 L	1398 L
TEMPERATURE RANGE	- 30° C / - 10° C	- 30° C / - 10° C	- 30° C / - 10° C
EXTERNAL DIMENSION (WxDxH) (MM)	620 X 665 X 800	740 x 830 x 2037	1480 x 830 x 2037



- ✓ Visual & acoustic alarms
- ✓ Compressor Alarm
- ✓ High / Low adjustable temperature alarms
- ✓ Power Failure alarm
- ✓ Open door alarm
- ✓ Track of alarms to be noted automatically
- ✓ Probe Failure alarm
- ✓ Contact for remote alarm
- ✓ Battery failure



- ✓ Approx. 48 hours battery Backup for alarms & logging



- ✓ Upload & Download through USB
- ✓ Memory for over 15 years of data

Biomedical Refrigerators

The PREMIUM Biomedical Refrigerators are designed, constructed and manufactured with high performance refrigeration systems

We use isolation thickness of 70mm to maximize the temperature stability in the refrigerators and together with our environment friendly refrigeration system, you get the upmost stabile Biomedical refrigerators to be used in clinical, pharmaceutical, biotech, industrial labs.

The PREMIUM Biomedical refrigerator line is available with solid and glass doors – and depending on your needs.

We deliver more than just storage

MODEL	BMR100	BMR628	BMR1398
CAPACITY	96 L	628 L	1398 L
TEMPERATURE RANGE	+ 1° C / + 10° C	+ 1° C / + 10° C	+ 1° C / + 10° C
EXTERNAL DIMENSION (WxDxH) (MM)	620 X 665 X 800	740 x 830 x 2037	1480 x 830 x 2037

Key features



- ✓ Intergrated datalogger
- ✓ Memory for over 15 years of data
- ✓ Interface Potential free remote contact & RS485
- ✓ Date & Time
- ✓ Password protected
- ✓ Temperature graph
- ✓ Ambient temperature
- ✓ Integrated test mode
- ✓ GSM module intergrated (Optional)



- ✓ Door lock
- ✓ Automatic door colsing
- ✓ Open door alarm
- ✓ Magnectic silicone gasket
- ✓ Solid or glass door



- ✓ IQ, OQ, PQT (Production Qualification Test)
- ✓ PQ test (Performance Qualification test)

BIOMEDICAL +1 / +10°C



MODEL	BMR100G	BMR628G	BMR1398G
CAPACITY	96 L	628 L	1398 L
TEMPERATURE RANGE	+ 1° C / + 10° C	+ 1° C / + 10° C	+ 1° C / + 10° C
EXTERNAL DIMENSION (WxDxH) (MM)	620 X 665 X 800	740 x 830 x 2037	1480 x 830 x 2037



- ✓ Visual & acoustic alarms
- ✓ Compressor Alarm
- ✓ High / Low adjustable temperature alarms
- ✓ Power Failure alarm
- ✓ Open door alarm
- ✓ Track of alarms to be noted automatically
- ✓ Probe Failure alarm
- ✓ Contact for remote alarm
- ✓ Battery failure



- ✓ Approx. 48 hours battery Backup for alarms & logging



- ✓ Upload & Download through USB
- ✓ Memory for over 15 years of data

SHELVES & DISPLAY

TOUCH SCREEN



All our PREMIUM line models are provided with a high-end colored touch screen with USB port integrated.

The Touch screen is extremely user friendly and due to the outside glass it is very easy to keep clean. With the high resolution you can see all the information very easy.

SHELVES

Our unit has shelves included as standard, the number of shelves depend on the size of the unit. We can also provide stainless steel drawers if requested for our Biomedical refrigerators and freezers. Our team is ready to provide you with detailed information.



TECHNICAL DATA



MODEL	BMF100	BMF628	BMF1398
CAPACITY	96 L	628 L	1398 L
TEMPERATURE RANGE	- 30° C / - 10° C	- 30° C / - 10° C	- 30° C / - 10° C
MAX. AMBIENT TEMPERATURE	+ 32° C	+ 32° C	+ 32° C
NUMBER OF COMPRESSORS	1	1	1
POWER SUPPLY	230V / 50Hz	230V / 50 Hz	230V / 50Hz
EXTERNAL DIMENSION (WxDxH) (MM)	620 X 665 X 800	740 X 830 X 2037	1480 X 830 X 2037
INTERNAL DIMENSION (WxDxH) (MM)	485 X 455 X 435	603 X 694 X 1500	1343 X 694 X 1500
SHIPPING DIMENSION (WxDxH) (MM)	680 X 735 X 960	800 X 900 X 2200	1520 X 970 X 2200
ALARM			
VISUAL / ACOUSTIC ALARM	√	√	√
OPEN DOOR ALARM	√	√	√
ALARM DISPLAY AS TEXT/ICONS - NOT CODES	√	√	√
POWER FAILURE ALARM	√	√	√
ADJUSTABLE HIGH / LOW TEMPERATURE ALARM	√	√	√
APPROX. 48 HRS. OF BATTERY BACKUP FOR ALARMS AND LOGGING	48	48	48
ISOLATION (MM)	70	70	70
WEIGHT (KG)	80	125	180
NUMBER OF SHELVES	1	3	6
MAX. SHELF LOAD (KG)	30	30	30
TOUCH SCREEN	√	√	√
INTERGRATED DATALOGGER	√	√	√
RS 485 INTERFACE	√	√	√
USB UP/DOWNLOAD	√	√	√
CASTORS LOCKABLE	√	√	√
AUTOMATIC DEFROST	√	√	√
KEY LOCK	√	√	√
NUMBER OF DOORS	1	1	2
REFRIGERANT	R290	R290	R290
INTERIOR MATERIAL	STAINLESS STEEL	STAINLESS STEEL	STAINLESS STEEL
EXTERIOR MATERIAL	POWDER COATED GALVANIZED STEEL	POWDER COATED GALVANIZED STEEL	POWDER COATED GALVANIZED STEEL

TECHNICAL DATA



MODEL	BMR100	BMR628	BMR1398
CAPACITY	96 L	628 L	1398 L
TEMPERATURE RANGE	+ 1° C / + 10° C	+ 1° C / + 10° C	+ 1° C / + 10° C
MAX. AMBIENT TEMPERATURE	+ 40° C	+ 40° C	+ 40° C
NUMBER OF COMPRESSORS	1	1	1
POWER SUPPLY	230V / 50Hz	230V / 50 Hz	230V / 50Hz
EXTERNAL DIMENSION (WxDxH) (MM)	620 X 665 X 800	740 X 830 X 2037	1480 X 830 X 2037
INTERNAL DIMENSION (WxDxH) (MM)	485 X 455 X 435	603 X 694 X 1500	1343 X 694 X 1500
SHIPPING DIMENSION (WxDxH) (MM)	680 X 735 X 960	800 X 900 X 2200	1520 X 970 X 2200
ALARM			
VISUAL / ACOUSTIC ALARM	√	√	√
OPEN DOOR ALARM	√	√	√
ALARM DISPLAY AS TEXT/ICONS - NOT CODES	√	√	√
POWER FAILURE ALARM	√	√	√
ADJUSTABLE HIGH / LOW TEMPERATURE ALARM	√	√	√
APPROX. 48 HRS. OF BATTERY BACKUP FOR ALARMS AND LOGGING	48	48	48
ISOLATION (MM)	70	70	70
WEIGHT (KG)	80	125	180
NUMBER OF SHELVES	1	3	6
MAX. SHELF LOAD (KG)	30	30	30
TOUCH SCREEN	√	√	√
INTERGRATED DATALOGGER	√	√	√
RS 485 INTERFACE	√	√	√
USB UP/DOWNLOAD	√	√	√
CASTORS LOCKABLE	√	√	√
AUTOMATIC DEFROST	√	√	√
LIGHTING	√	√	√
KEY LOCK	√	√	√
NUMBER OF DOORS	1 SOLID DOOR	1 SOLID DOOR	2 SOLID DOORS
REFRIGERANT	R290	R290	R290
INTERIOR MATERIAL	STAINLESS STEEL	STAINLESS STEEL	STAINLESS STEEL
EXTERIOR MATERIAL	POWDER COATED GALVANIZED STEEL	POWDER COATED GALVANIZED STEEL	POWDER COATED GALVANIZED STEEL

TECHNICAL DATA



MODEL	BMR100G	BMR628G	BMR1398G
CAPACITY	96 L	628 L	1398 L
TEMPERATURE RANGE	+ 1° C / + 10° C	+ 1° C / + 10° C	+ 1° C / + 10° C
MAX. AMBIENT TEMPERATURE	+ 32° C	+ 32° C	+ 32° C
NUMBER OF COMPRESSORS	1	1	1
POWER SUPPLY	230V / 50Hz	230V / 50 Hz	230V / 50Hz
EXTERNAL DIMENSION (WxDxH) (MM)	620 X 665 X 800	740 X 830 X 2037	1480 X 830 X 2037
INTERNAL DIMENSION (WxDxH) (MM)	485 X 455 X 435	603 X 694 X 1500	1343 X 694 X 1500
SHIPPING DIMENSION (WxDxH) (MM)	680 X 735 X 960	800 X 900 X 2200	1520 X 970 X 2200
ALARM			
VISUAL / ACOUSTIC ALARM	√	√	√
OPEN DOOR ALARM	√	√	√
ALARM DISPLAY AS TEXT/ICONS - NOT CODES	√	√	√
POWER FAILURE ALARM	√	√	√
ADJUSTABLE HIGH / LOW TEMPERATURE ALARM	√	√	√
APPROX. 48 HRS. OF BATTERY BACKUP FOR ALARMS AND LOGGING	48	48	48
ISOLATION (MM)	70	70	70
WEIGHT (KG)	85	132	194
NUMBER OF SHELVES	1	3	6
MAX. SHELF LOAD (KG)	30	30	30
TOUCH SCREEN	√	√	√
INTERGRATED DATALOGGER	√	√	√
RS 485 INTERFACE	√	√	√
USB UP/DOWNLOAD	√	√	√
CASTORS LOCKABLE	√	√	√
AUTOMATIC DEFROST	√	√	√
LIGHTING	√	√	√
KEY LOCK	√	√	√
NUMBER OF DOORS	1 GLASS DOOR	1 GLASS DOOR	2 GLASS DOORS
REFRIGERANT	R290	R290	R290
INTERIOR MATERIAL	STAINLESS STEEL	STAINLESS STEEL	STAINLESS STEEL
EXTERIOR MATERIAL	POWDER COATED GALVANIZED STEEL	POWDER COATED GALVANIZED STEEL	POWDER COATED GALVANIZED STEEL