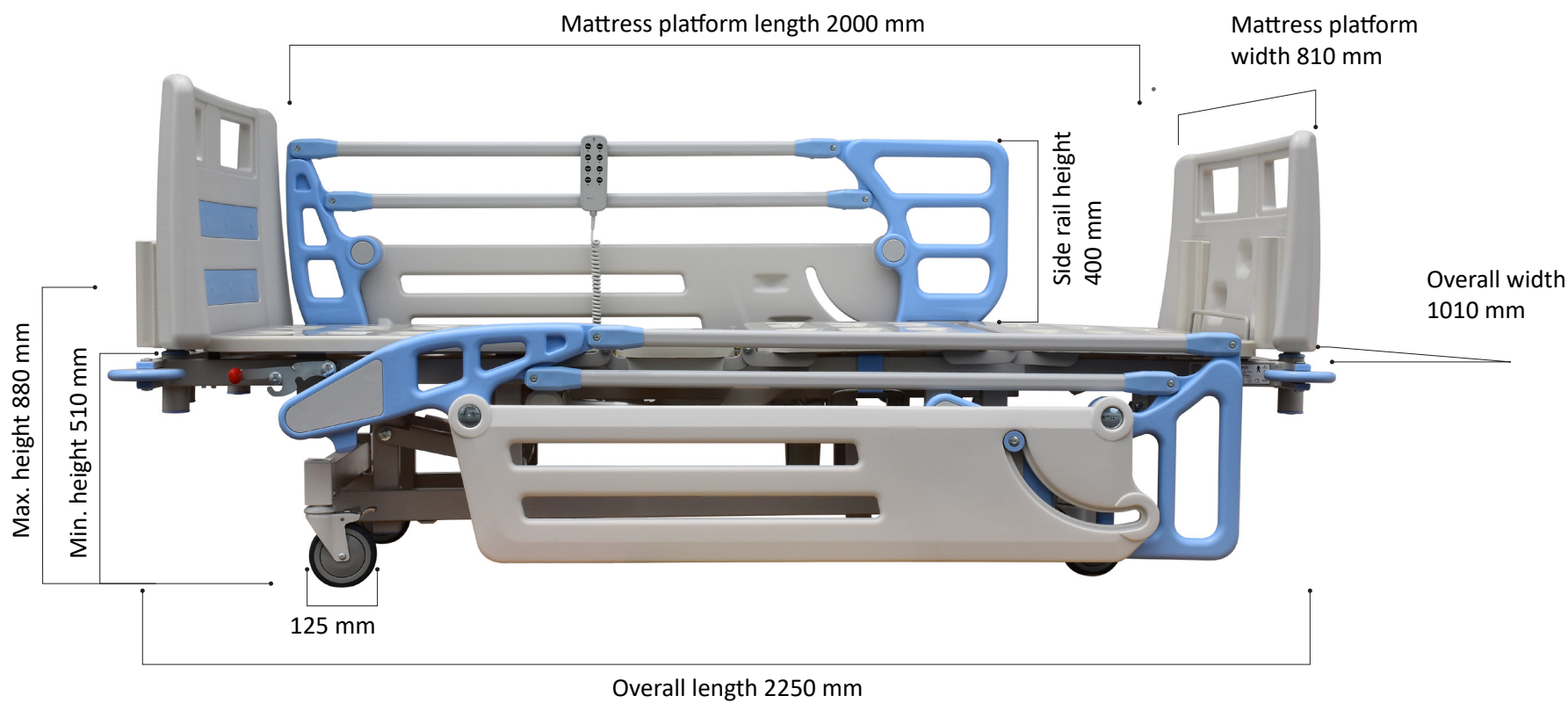


General Bed 35000EC1



General Bed 35000EC1

Positions



Technical Specifications

Overall dimensions	2250 mm × 1010 mm	Casters	125 mm	Technical and Quality Assurance Standards
Mattress platform	2000 mm × 810 mm	Power input max.	250 VA	IEC 60601 - 2 - 52
Hi - Low	880 mm - 510 mm	Main power system	220V – 50 Hz, 24 V DC	ISO 13485
Side rail height	400 mm	Electrical current protection	Class I	ISO 14971
Back rest angle	0 - 80°	Electrical shock protection	Type B	
Knee rest angle	0 - 30°	Operation mode	10%, max.: 2 min/18 min	
Bed weight	135 kg	IP rating	IP 66	
Safe working load	250 kg			



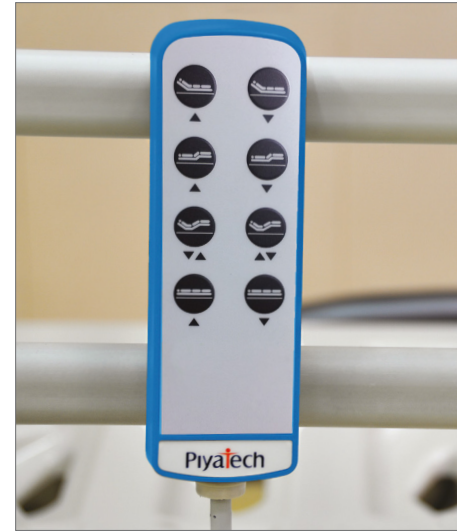
General Bed 35000EC1

Features



Bed Ends

The high quality, seamless blow molded bed ends of model 35000EC1 are lightweight, durable, and easily washable and steam cleaned. In case of emergency, the caregiver can easily remove the bed ends by grasping the hand holds and lifting up, offering better access to the patient's head and upper body. Additionally, the bed end's integrated steel fittings further enforce the sturdiness of the structure and help to ensure smooth, reliable transportation.



Pendant Control

The user friendly handset control offers an array of illustrated push buttons, making adjusting the position of the bed simple. The pendant controller can be placed on both of the side rails for easy access.



Mattress Platforms

The ABS mattress platforms are produced by injection molding. The platforms boast a number of helpful features, like smooth surfaces, high durability, and a lightweight, easily transportable frame enabling quick and painless removal for cleaning and disinfection, including steam cleaning.



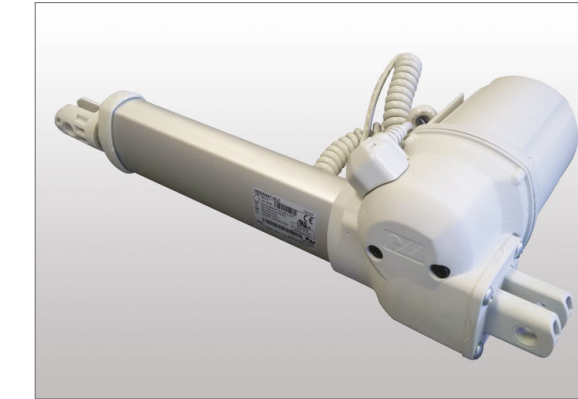
Bumpers

Rotary bumpers are located on all four corners of the bed to mitigate potential damage during unintended collisions.



Urine Bag Holder

Urine bag holders can be easily installed in one step on either side of the bed.



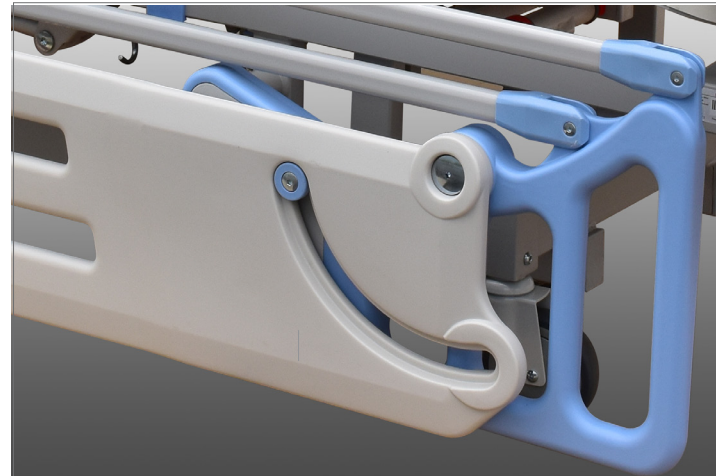
Actuators

The powerful actuators of the 35000EC1 maneuver the bed seamlessly and quietly into a variety of positions. With an IP66 rating, the actuators are dust and water resistant and are easily accessible for cleaning and disinfection.



Casters

The 130 mm casters move smoothly, ensuring quick and easy transport for the nursing staff. The diagonal locks can be activated to prevent unintended movements.



Side Rails

The parallel side rails of the 35000EC1 offer a unique and stylish design produced from a combination of blow molded plastic and steel bars to provide a protective height and length. The side rails adhere to the highest standards of safety to prevent patient falls and entrapment."